

IBEX HOUSE

42-47 MINORIES, LONDON EC3

OFFICES TO LET
3,459 SQ FT (321.35 SQ M)
WWW.IBEX-HOUSE.COM

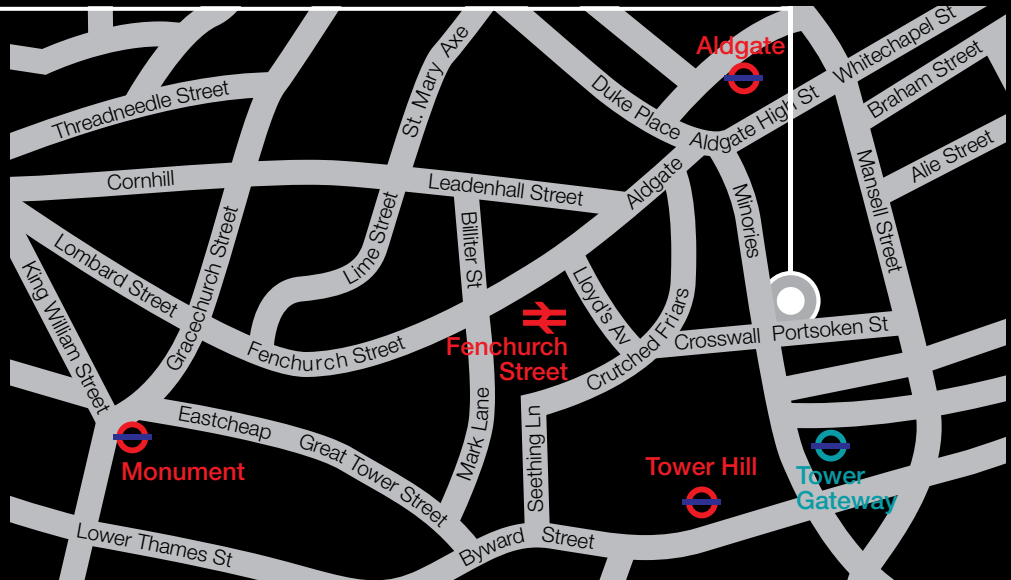
IBEX HOUSE

DESCRIPTION

Ibex House is a landmark Art Deco office building and benefits from a major health club facility on the lower ground and basement levels.

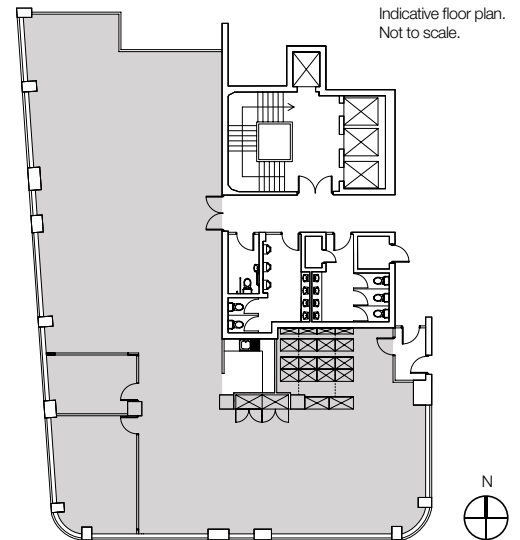
LOCATION

Ibex House is located on the east side of Minories, at its junction with Haydon Street. Fenchurch Street mainline station, Tower Hill underground station and Tower Gateway DLR station are all close by.



AMENITIES

- ▣ Air conditioning
- ▣ Raised floors
- ▣ Metal tile suspended ceiling with CAT 2 lighting
- ▣ Male and female WCs
- ▣ Prestige entrance and reception area
- ▣ Automatic passenger lifts
- ▣ Health club facilities (with swimming pool)
- ▣ Broadband wired
- ▣ 24 hour access and security
- ▣ Excellent natural light
- ▣ 2 meeting rooms



Ostroumoff
020 7036 9980

www.ostro-re.co.uk
50 Leadenhall St, London EC3A 2BJ

David Dunsdon

david.dunsdon@ostro-re.co.uk
020 7036 9980

Peter Wild

peter.wild@ostro-re.co.uk
020 7036 9980

IMPORTANT NOTICE RELATING TO THE MISREPRESENTATION ACT 1967 AND THE PROPERTY MISDESCRIPTIONS ACT 1991. Ostroumoff, on behalf and for the lessors of this property whose agents they are, give notice that: The particulars are set out as a general outline only for guidance of intending lessees and do not constitute, nor constitute part of, an offer or contract. Subject to contract. (Nov 2009)

